



COVID 19 GUIDELINES

**Sturgis Charter
Public School**



September 2021

QUARANTINE GUIDELINES FOR COVID-19

All individuals, regardless of vaccination status, must quarantine per school protocol if identified as a close contact of a positive case of COVID-19 **outside of school**. Out of school exposures are likely to be unmasked, more prolonged, and in less structured environments than in school.

What is a close contact?

- **School and community exposures:** you must have been within 6 feet of a COVID-19 positive individual while indoors, for at least 15 minutes during a 24 hour period. The at-risk exposure time begins 48 hours prior to symptom onset (or time of positive test if asymptomatic) and continues until the time the COVID-19 positive individual is isolated.
- **Household exposures:** Quarantines for household exposure can range from 8-18 days depending on your family's specific situation. Please speak directly with the school nurse so your situation can be assessed, and a sufficient quarantine period can be established. Every effort will be made to provide the shortest possible quarantine period, while still ensuring the safety of the Sturgis community.

Please note that the Board of Health in your town, the Community Contact Tracing Collaborative, or your doctor may advise you to quarantine for a different period of time based on your situation.

Please note that Sturgis will only notify families of students who have been deemed a close contact. While we perform extensive contact tracing to ensure safety, it is important to understand that quarantining may not be required.

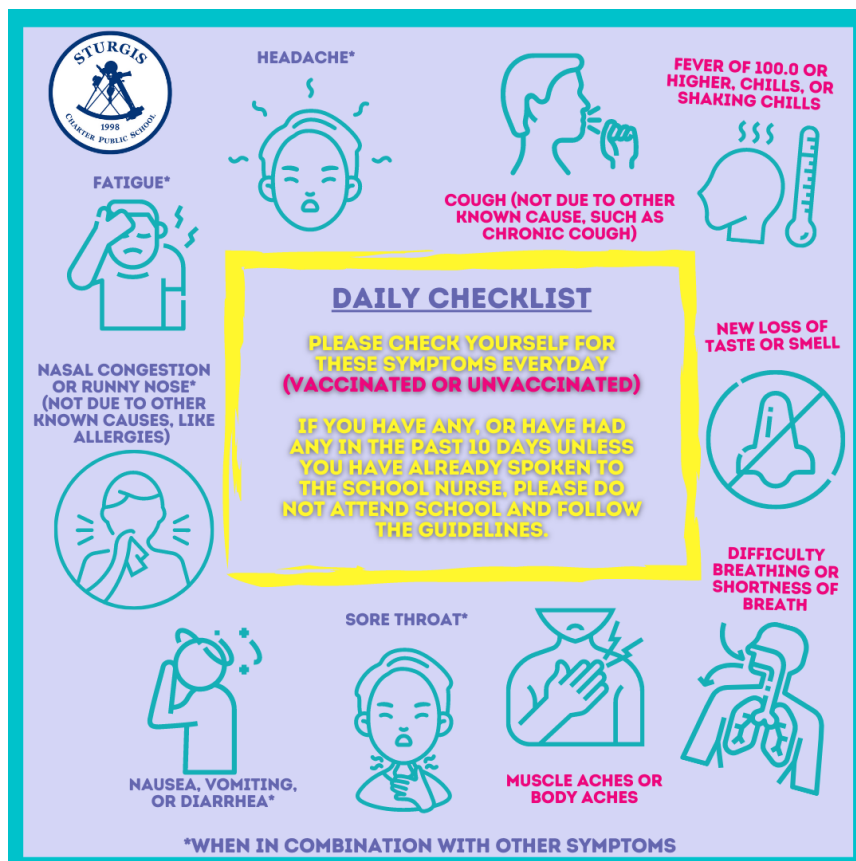
QUARANTINE GUIDELINES

	No Quarantine	7-day Quarantine (return day 8)	10-day Quarantine (return day 11)
In-School Exposure	Vaccinated <ul style="list-style-type: none">• Have no symptoms• Recommended to test on day 5• Monitor for symptoms for 14 days	Unvaccinated <ul style="list-style-type: none">• Test negative on day 5• Have no symptoms• Monitor symptoms for 14 days	Unvaccinated <ul style="list-style-type: none">• No test taken• Have no symptoms• Monitor symptoms for 14 days
Out-of-School Exposure*		Vaccinated or Unvaccinated <ul style="list-style-type: none">• Test negative on day 5• Have no symptoms• Monitor symptoms for 14 days	Vaccinated or Unvaccinated <ul style="list-style-type: none">• No test taken• Have no symptoms• Monitor symptoms for 14 days

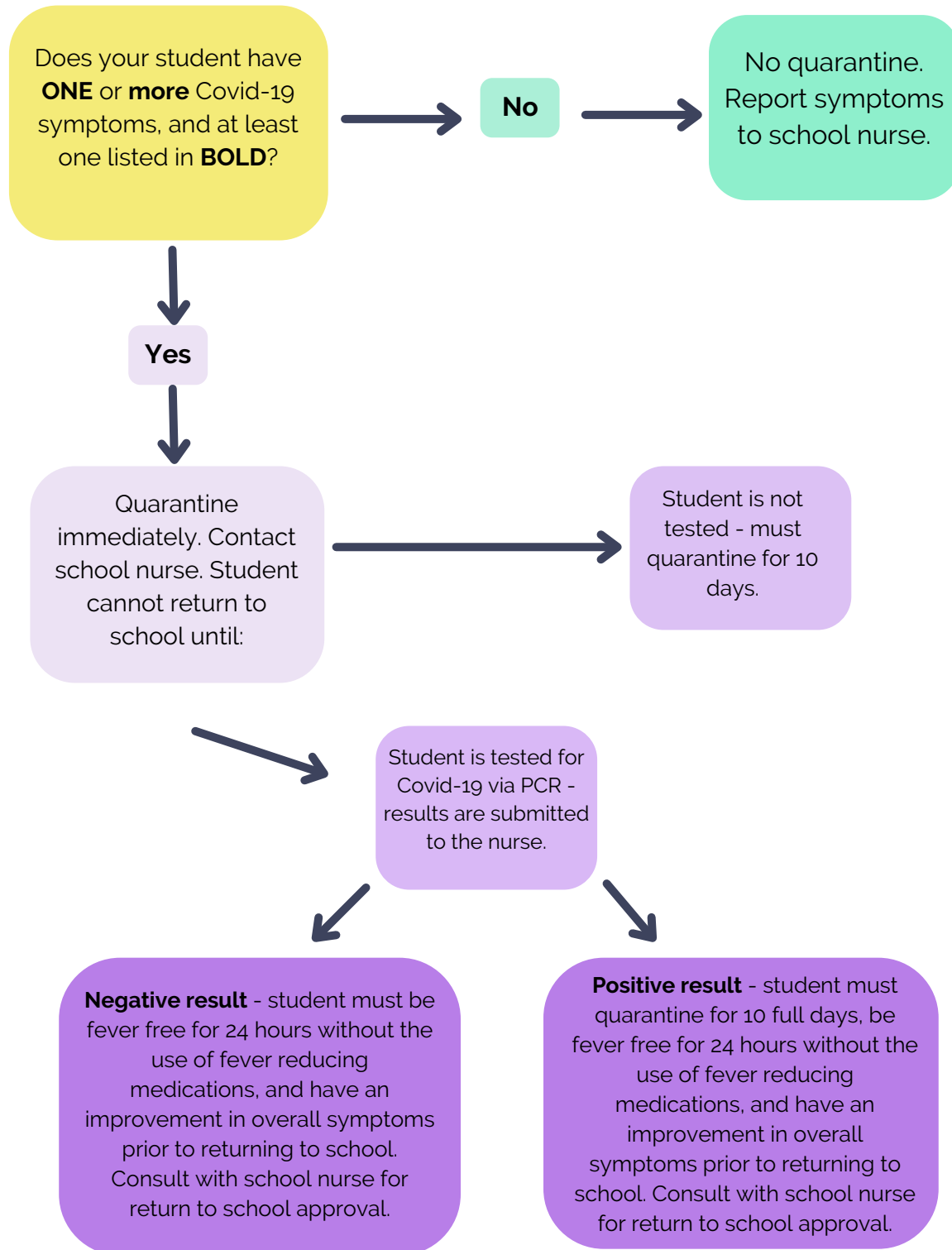
* Applies to non-household exposures only. Please speak with the school nurse for specific quarantine guidelines on household exposures.

COVID-19 SYMPTOMS

- Fever of 100.0 or higher, chills, or shaking chills
- Cough (not due to other known cause, such as chronic cough)
- Difficulty breathing or shortness of breath
- New loss of taste or smell
- Muscle aches or body aches
- Sore throat *when in combination with other symptoms
- Headache *when in combination with other symptoms
- Nausea, vomiting, or diarrhea *when in combination with other symptoms
- Fatigue *when in combination with other symptoms
- Nasal congestion or runny nose *(not due to other known causes, such as allergies) when in combination with other symptoms



VACCINATED STUDENTS



UNVACCINATED STUDENTS

